

The Scott Inlet – Buchan Gulf Oil Seeps: Actively venting petroleum systems on the northern Baffin Margin offshore Nunavut, Canada

Gordon. N. Oakey¹, Phil N. Moir^{1*}, Tom Brent², Kate Dickie¹, Chris Jauer¹, Robbie Bennett¹, Graham Williams¹, Brian MacLean¹, Paul Budkewitsch^{4**}, Jim Haggart³, Lisel Currie²

¹ Geological Survey of Canada (Atlantic), 1 Challenger Drive, Dartmouth, Nova Scotia, Canada, B2Y 4A2

² Geological Survey of Canada (Calgary) 3303-33rd St. NW, Calgary, Alberta, Canada, T2L 2A7

³ Geological Survey of Canada (Pacific) 625 Robson St., Vancouver, British Columbia, Canada V6B 5J3

⁴ Canada Centre for Remote Sensing, 588 Booth Street, Ottawa, Ontario, Canada, K1A 0Y7

* retired

** now with Aboriginal Affairs and Northern Development Canada, PO Box 2000, Iqaluit, Canada, X0A 0H0

GeoConvention 2012: Vision

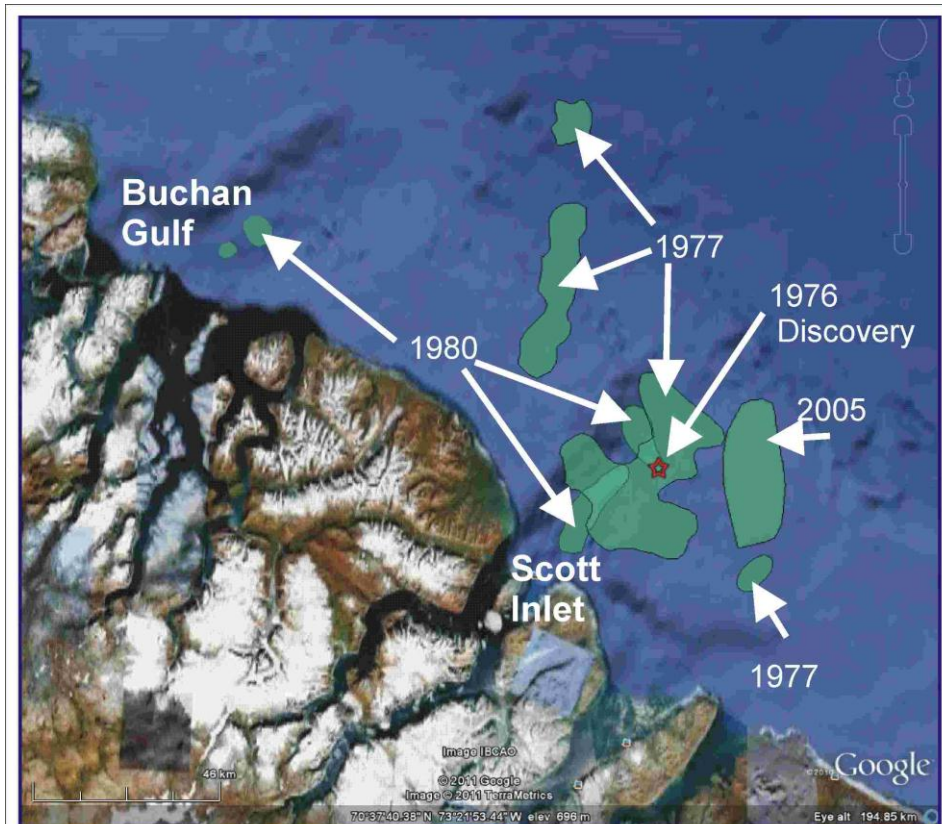
New analyses of legacy geophysical, geological and geochemical data have been integrated with modern multibeam bathymetry, RADARSAT imagery, and onshore geological mapping into a regional study of the petroleum system on the northern Baffin shelf offshore Nunavut. Industry seismic reflection profiles show that the Scott Inlet Graben is the southern end of an elongated basin (200-300 km by 25-50 km wide) extending to the northwest along the Baffin Margin – now named Scott Inlet Basin – which contains up to 6 km of Mesozoic and Cenozoic strata. The seismic data define the outer edge of the Scott Inlet Basin; however, the landward edge is largely unknown and may locally outcrop onshore.

Recent multibeam bathymetry data have been collected over the Scott Inlet Seep location as part of the ARCTICNET Research Program to study benthic habitats and geohazards in the Canadian Arctic waterways. The bathymetric mapping has identified complex patterns of Quaternary seafloor sedimentary processes and modern iceberg scouring. Also imaged are (Precambrian?) bedrock outcrops on the seafloor along the western edge of Scott Inlet Basin with indications of fault structures controlling basin development, as well as pock-marks interpreted to be petroleum escape features. In 2009, video was collected using a remotely operated vehicle showing petroleum actively venting from the seafloor. Repeat satellite radar sea surface mapping confirms the existence of extensive and persistent oil slicks. Large slicks exceed 250 km², each representing over 50,000 barrels of oil on the sea-surface. Whether these slicks are formed from continuous venting of petroleum or episodic events (possibly triggered by local seismicity) is unknown.

New palynological analysis of the 1980s GSC short rock cores of sedimentary strata in the Scott Inlet Basin indicate a Turonian to Campanian age for the mudstones of Home Bay and Buchan Gulf, and the black shales at Scott Inlet. Geological mapping onshore Bylot Island, northwest of the Scott Inlet Basin has identified middle Albian to possible Turonian strata suggesting a correlative equivalent with the Hassel Formation, widespread in the Canadian Arctic. A 500 m thick coarse grained sandstone unit that is widespread on southwest Bylot Island may be a possible coeval equivalent for the reservoir rocks

within the Scott Inlet Basin. New geochemical analysis of the 1985 Pisces-IV oil sample confirms a biodegraded mature oil with biomarkers suggesting an upper Cretaceous marine source. The sample has similarities to the Itilli oil type identified in West Greenland, thought to be generated from Cenomanian to Turonian marine shales.

The Scott Inlet Basin contains an active petroleum system with a significant potential for a viable hydrocarbon discovery. Mapping of the area is sparse and continued research would greatly improve the understanding of the geological history of the area as well as provide a natural laboratory for studying the effects of petroleum contamination in an Arctic marine environment.



Scott Inlet and Buchan Gulf area with slick outlines from:
1977 slicks mapped by Levy 1978
1980 slicks mapped by Levy and MacLean 1981
2005 slick extent from Budkewitsch 2006.

Budkewitsch, P., McGregor, R., Oakey, G., Pavlic G., Wolfe, J. 2006. RADARSAT-1 Observations from Davis Strait to Baffin Bay for Off-shore Oil Seep Detection. Poster and Abstract. OceanSAR2006 23-25 October, St. John's, Newfoundland&Labrador. <http://www.oceansar2006.com/>

Levy, E.M. 1978. Visual and chemical evidence for a natural seep at Scott Inlet, Baffin Island, District of Franklin; Current Research, Part B, Geol. Survey of Canada, Paper 78-1B, p. 21-26.

Levy, E.M. and MacLean, B. 1981. Natural hydrocarbon seepage at Scott Inlet and Buchan Gulf, Baffin Island Shelf: an update; Current Research, Part A, Geological Survey of Canada, Paper 81-1A, p. 401-403.